



SWITCH HOMES

Building Sustainable & Affordable Communities



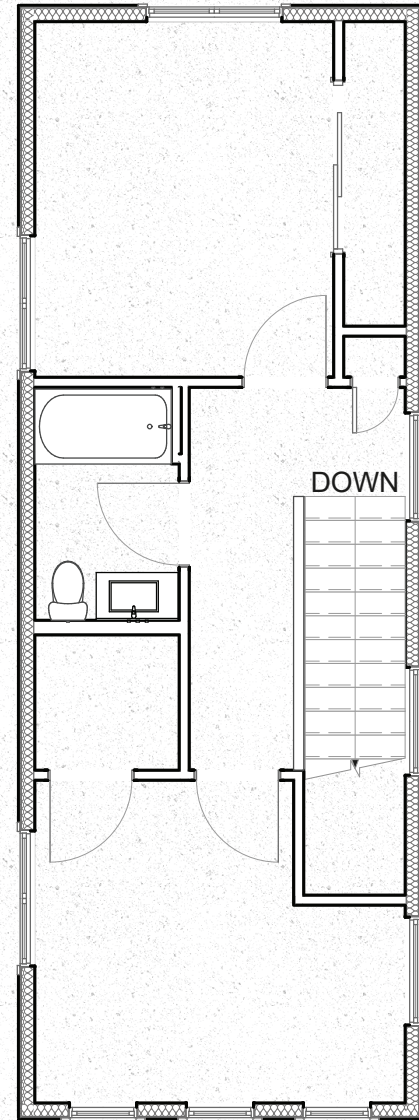
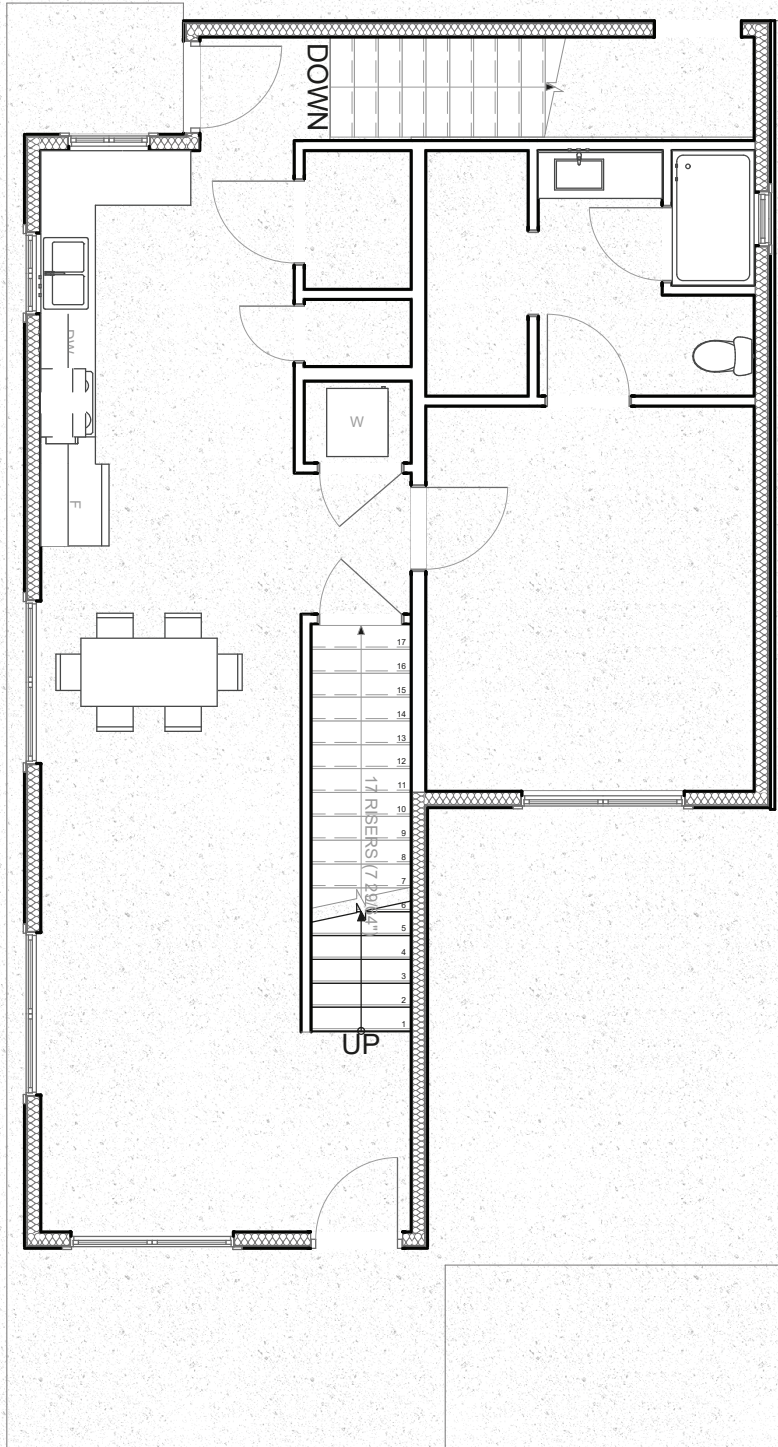
The Two Year Old

6044 Mississippi Avenue
Davenport, Iowa



SWITCH HOMES

Building Sustainable & Affordable Communities





We build our homes with all of our futures in mind.
Every decision was thoughtfully made with our environment and your families quality of life in mind.
In other words, your friends might be jealous.

The Two Year Old

1530sf • 3 bed / 2 bath

A two-year-old is kind of like having a blender, but you don't have a top for it. Have a 2 year old? This is a great one for you!

We've taken our already perfected "My mom says I'm cool", and added a few more bedrooms for your little rascals. We feel this layout is the perfect home to raise that family!



SWITCH HOMES
Building Sustainable & Affordable Communities

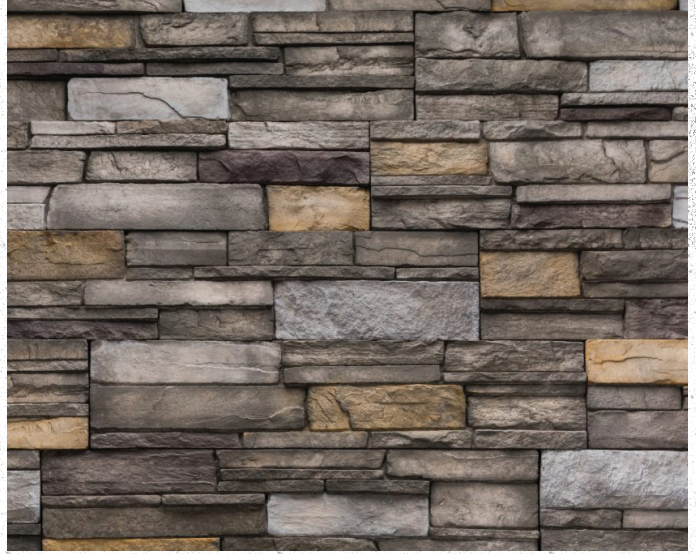
JOIN SWITCH HOMES IN CREATING SUSTAINABLE
COMMUNITIES WHERE BEAUTY AND CREATIVITY THRIVE!

LP SMARTSIDE EXPERT FINISH SIDING



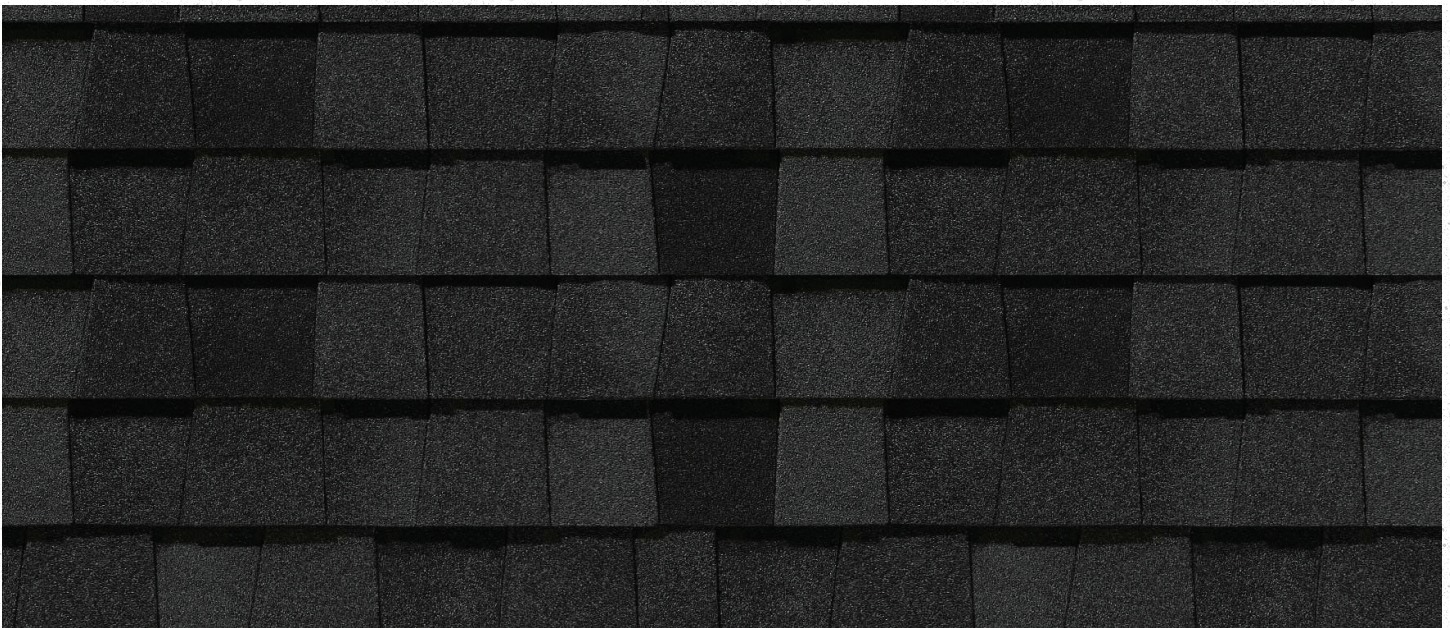
Prairie Gray

VENEER STONE/VERSETTA STONE LEDGESTONE STYLE



Sterling Stone w/ Stone Grey Cap

CERTAINTED NORTHGATE CLIMATEFLEX SHINGLES



Moire Black

DOORS



Masonite Winslow
Interior Door – Pure White



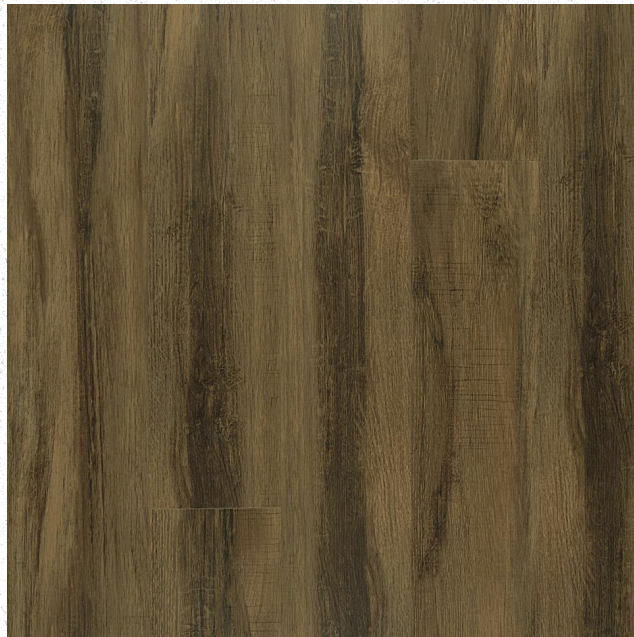
EL & EL Wood Products
Heritage 2 Panel w/ Glass
Exterior Door – Wrought Iron

BENJAMIN MOORE PAINT



Wrought Iron

DOWNNS LIFE H2O VINYL FLOORING



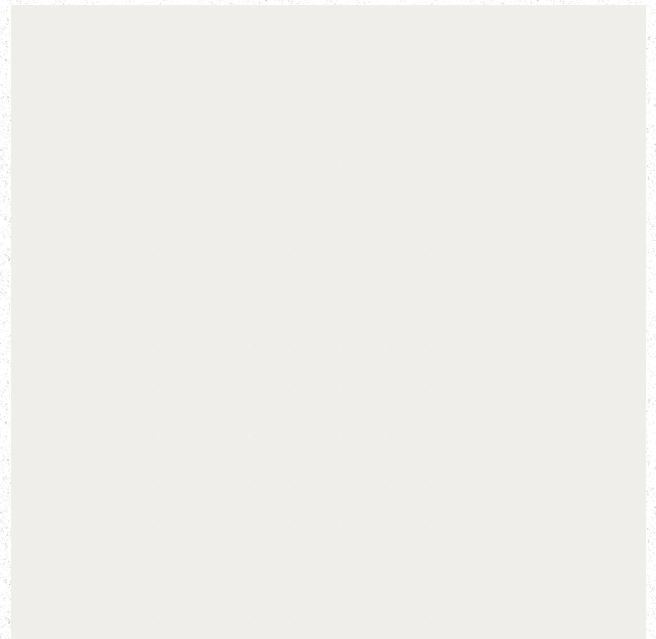
Noble Willow Golf

RESISTA SOFT STYLE CARPET



After It II Reflection

DALTILE BACKSPLASH

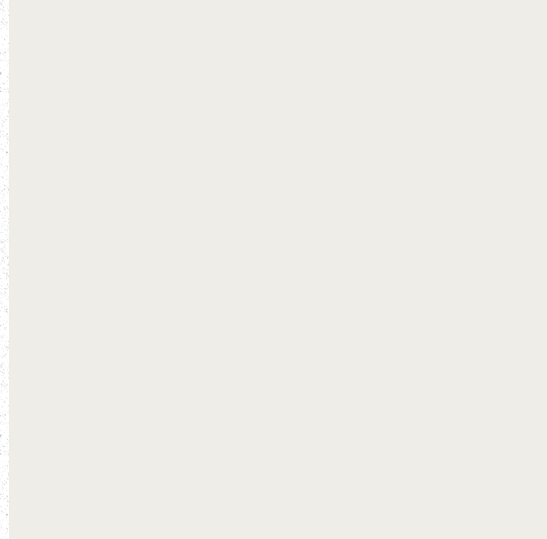


Color Wheel Retro Arctic White

SHERWIN WILLIAMS PAINT

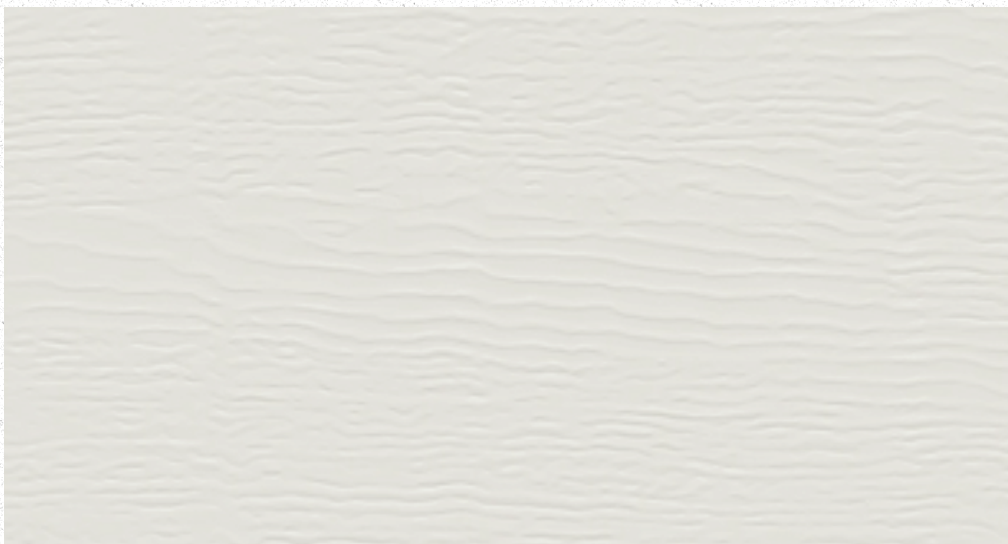


Walls – Agreeable Gray



Ceiling, Doors and Base – Pure White

GARAGE DOOR



Polar White

DELTA BATHROOM

Shower Trim



Trinsic Chrome

Faucets



Trinsic Chrome

Accessories



Trinsic Chrome

GERBER TOILET



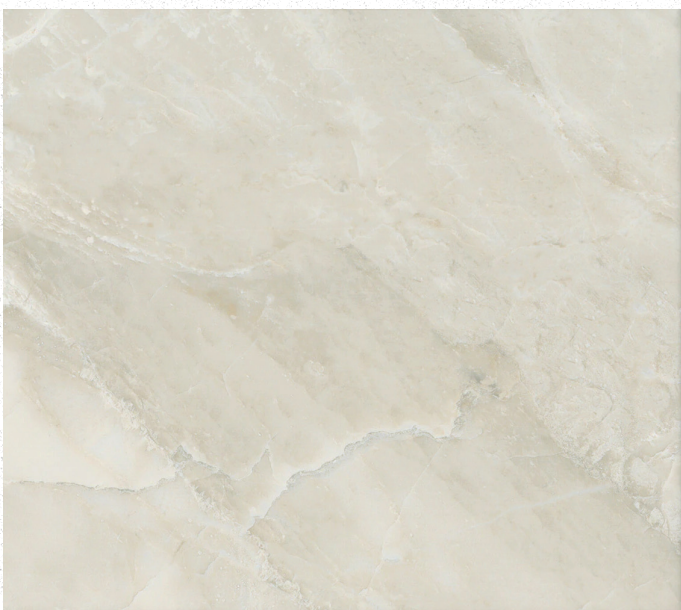
Viper White

KOHLER BATHROOM SINK

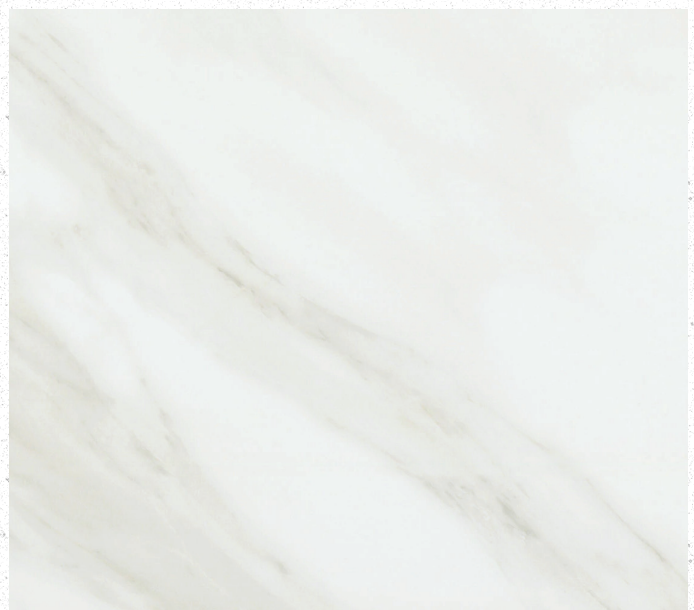


Bryant White

AMERICAN OLEAN SHOWER PORCELAIN TILE



Shower Wall – Mirasol Silver Marble



Shower Floor – Mirasol Bianco Carrara

NORTH POINT CABINETS



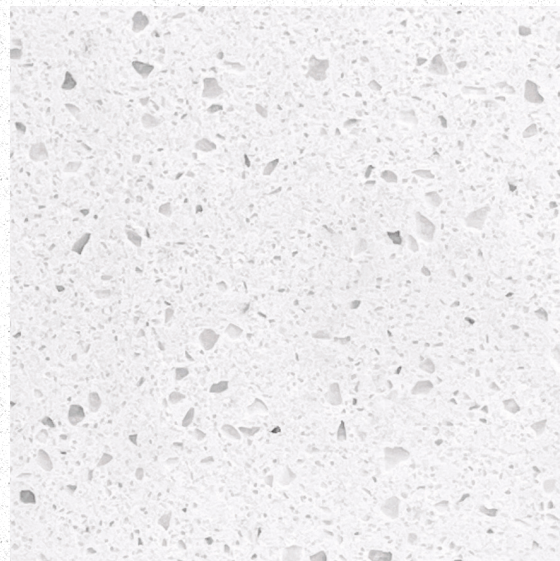
Catalina Slate

HARDWARE RESOURCES



Elements Chrome

THE VIVA STONE GRANITE



Pebbles Ice

DELTA KITCHEN FAUCETS



Monrovia Chrome

KOHLER KITCHEN SINK

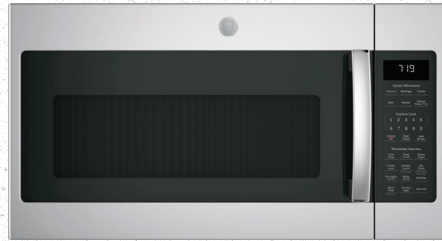


Kohler White

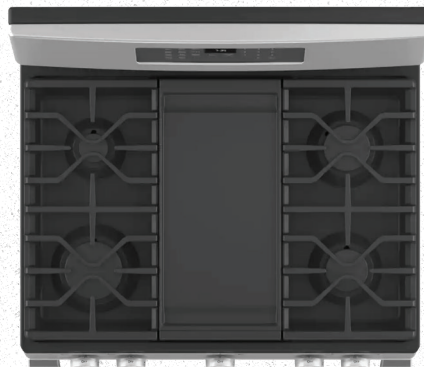
GENERAL ELECTRIC STAINLESS STEEL APPLIANCES



Side-by-Side Refrigerator



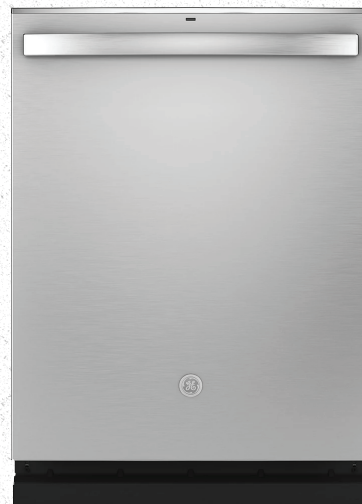
Over-the-Range Microwave



Gas Range with Self-Cleaning Convection Oven and Air Fry



Built-in Dishwasher



AIR CONDITIONING



Trane XR15



SWITCH HOMES

Building Sustainable & Affordable Communities

SUSTAINABLE FEATURES

- High SEER Value HVAC system
- Energy Star Appliances
- Electric Charging Station at ALL Homes
- LED Fixtures Throughout
- 2x6 Exterior Wall Construction Typical
- High U-Value Pella® Windows
- Solid Core Interior Wood Doors
- Delta Plumbing fixtures
- Resista Carpet in Bedrooms
- High Recycled Content Luxury Vinyl Tile (LVT) throughout
- Custom 5'x3' Tile Shower in the Master Bath
- Soft-close Cabinet Doors and Drawer Glides
- Quartz Countertops
- Versetta Stone Veneer with Minimum 50% Recycled Content
- High R-value Wall Insulation
- Rigid Insulation Below Entire Slab
- WeatherLogic wall and Roof Sheathing (by LP)
- LP SmartSide Siding
- Smart home with Ring Doorbell, Nest Thermostat, Nest Fire & Carbon Monoxide detectors, electric entry lockset, WiFi enabled garage door operator.

* Online, or PDF, colors shown may vary slightly due to computer settings or printed quality. Please contact us to view actual samples before final selection.